



PANEL PRESENTATION
JULY -2022



**DAVID FLEETING
ARCHITECTS**
DAVIDF@DFARCHITECTS.COM.AU
0407414755

HARTFORD COLLEGE

200 BOYS Yrs 5-12
20 + STAFF

2023 – Yrs 5 + 6 + 7

2024 – Yr 8

2025 – Yr 9

2026 – Yr 10

2027 – Yr 11

2028 – Yr 12

AERIAL PLAN-OVERVIEW

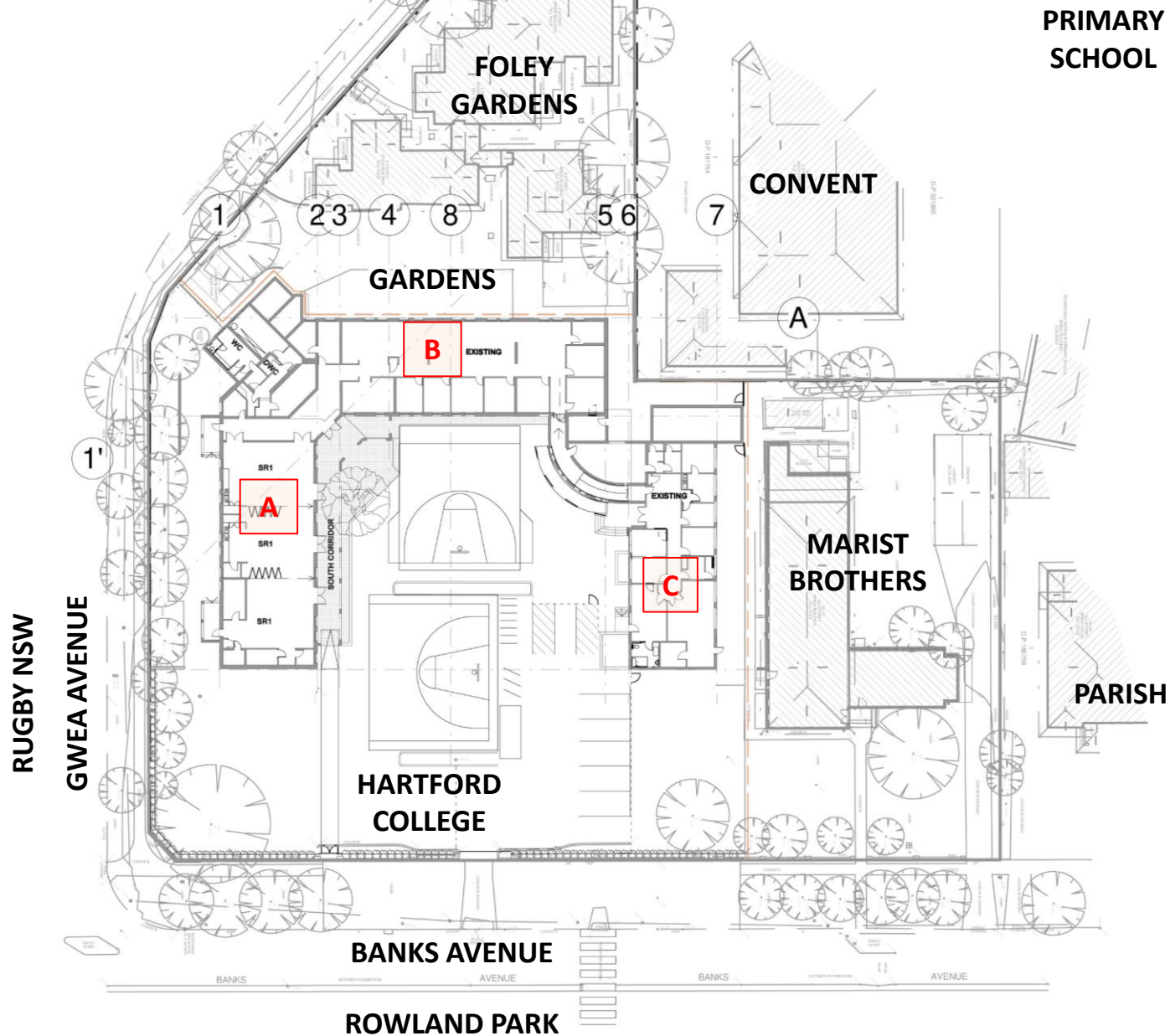


field

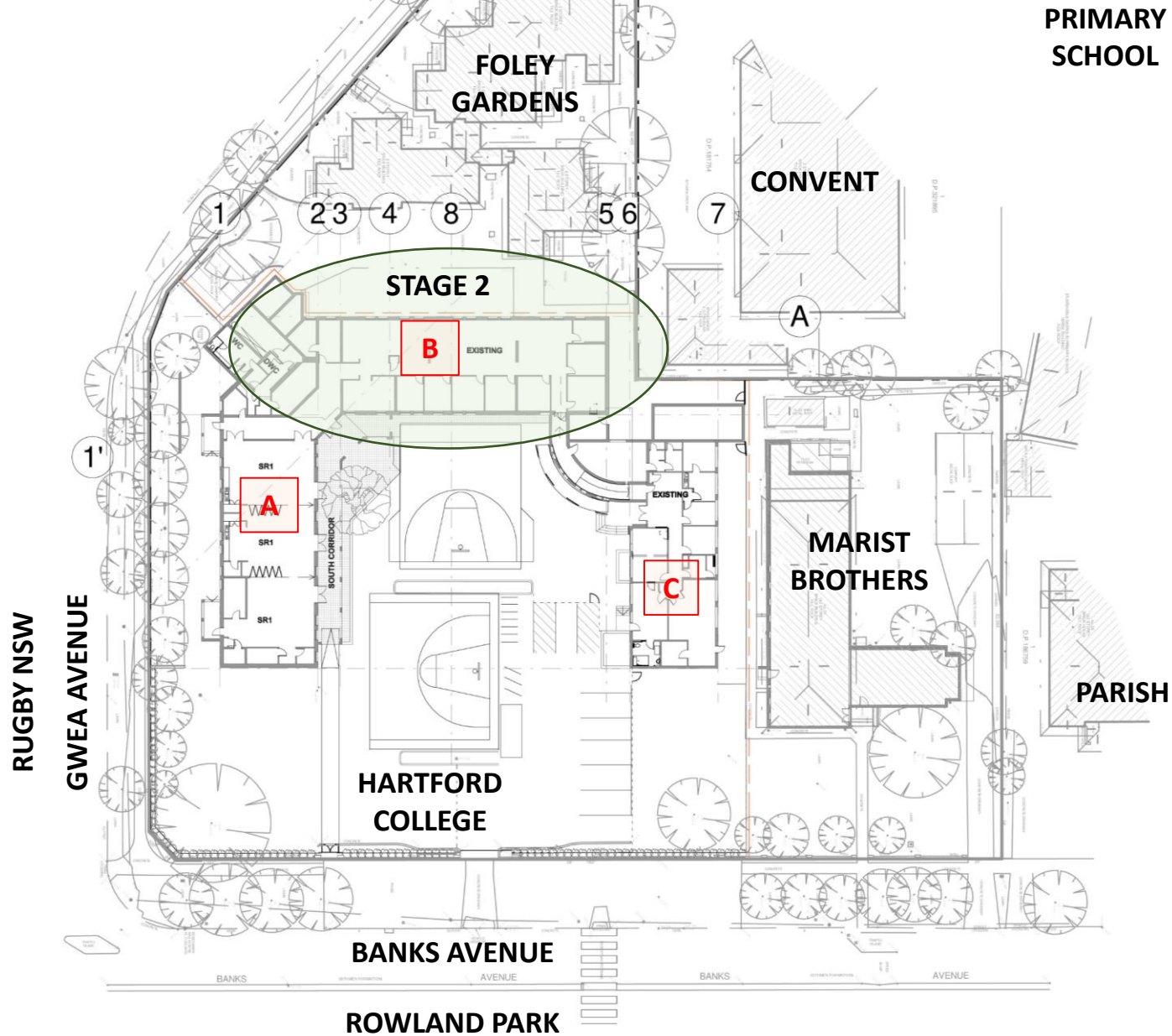
AERIAL PLAN-ZOOM



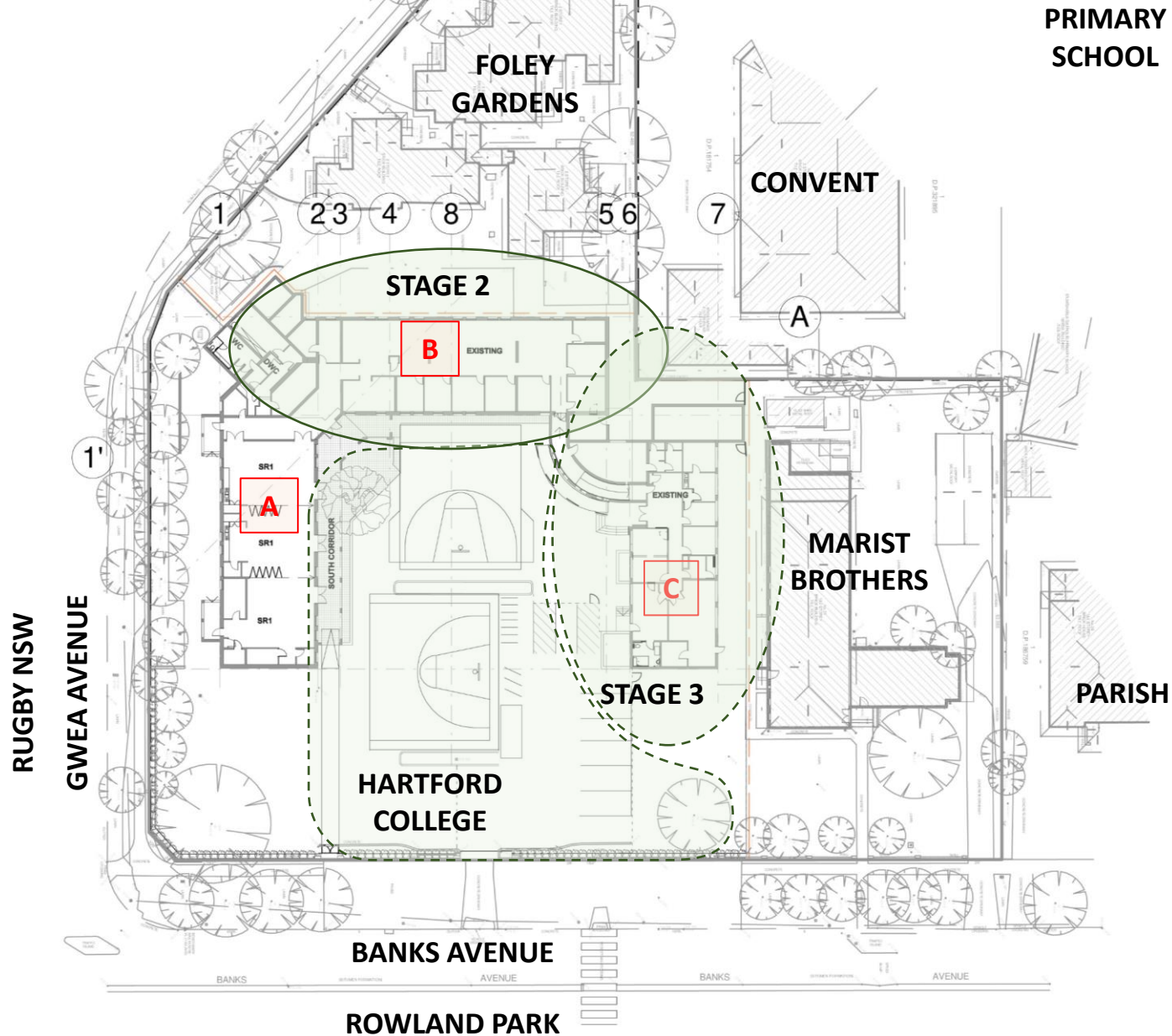
SITE PLAN



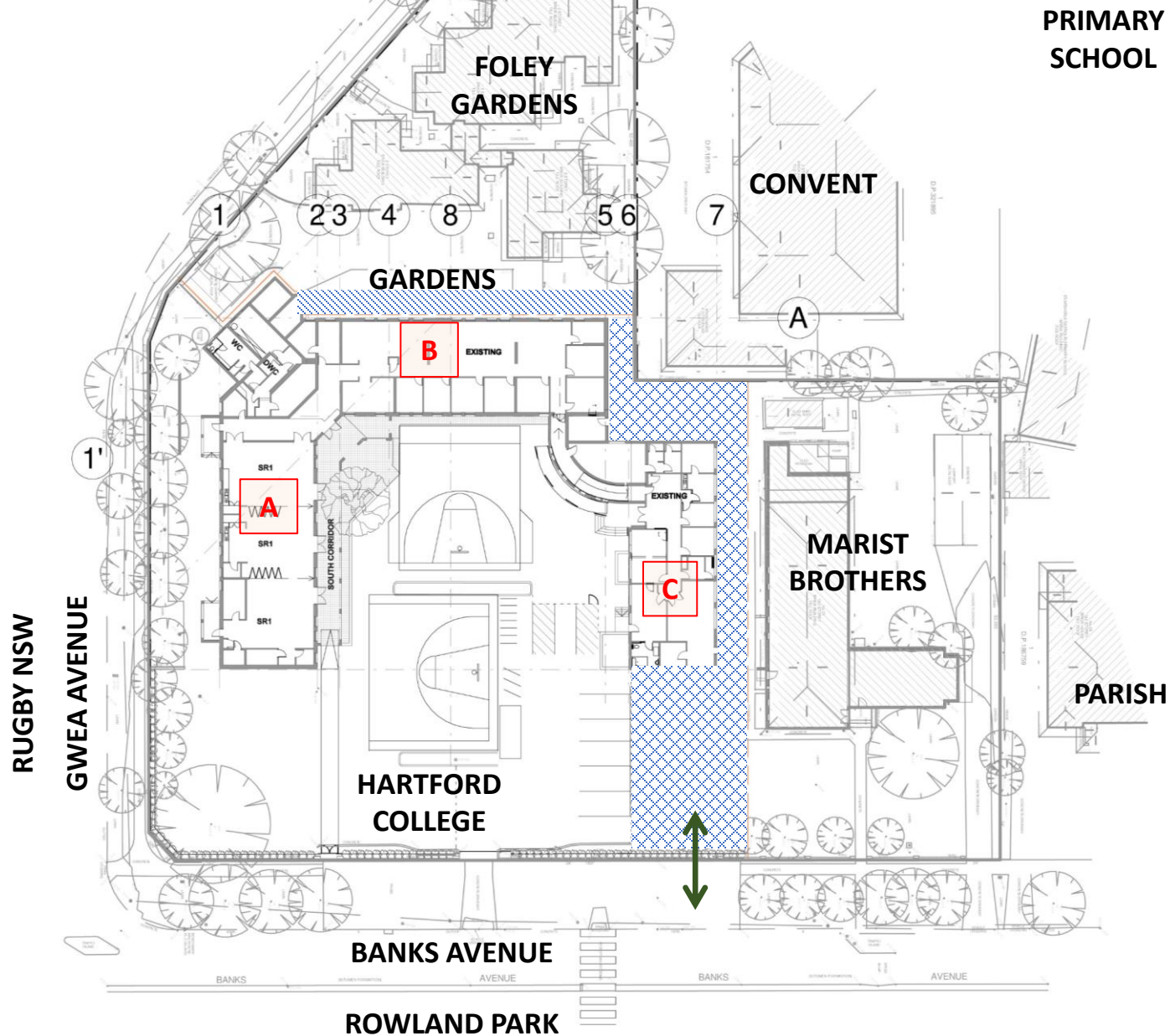
SITE PLAN-STAGE 2



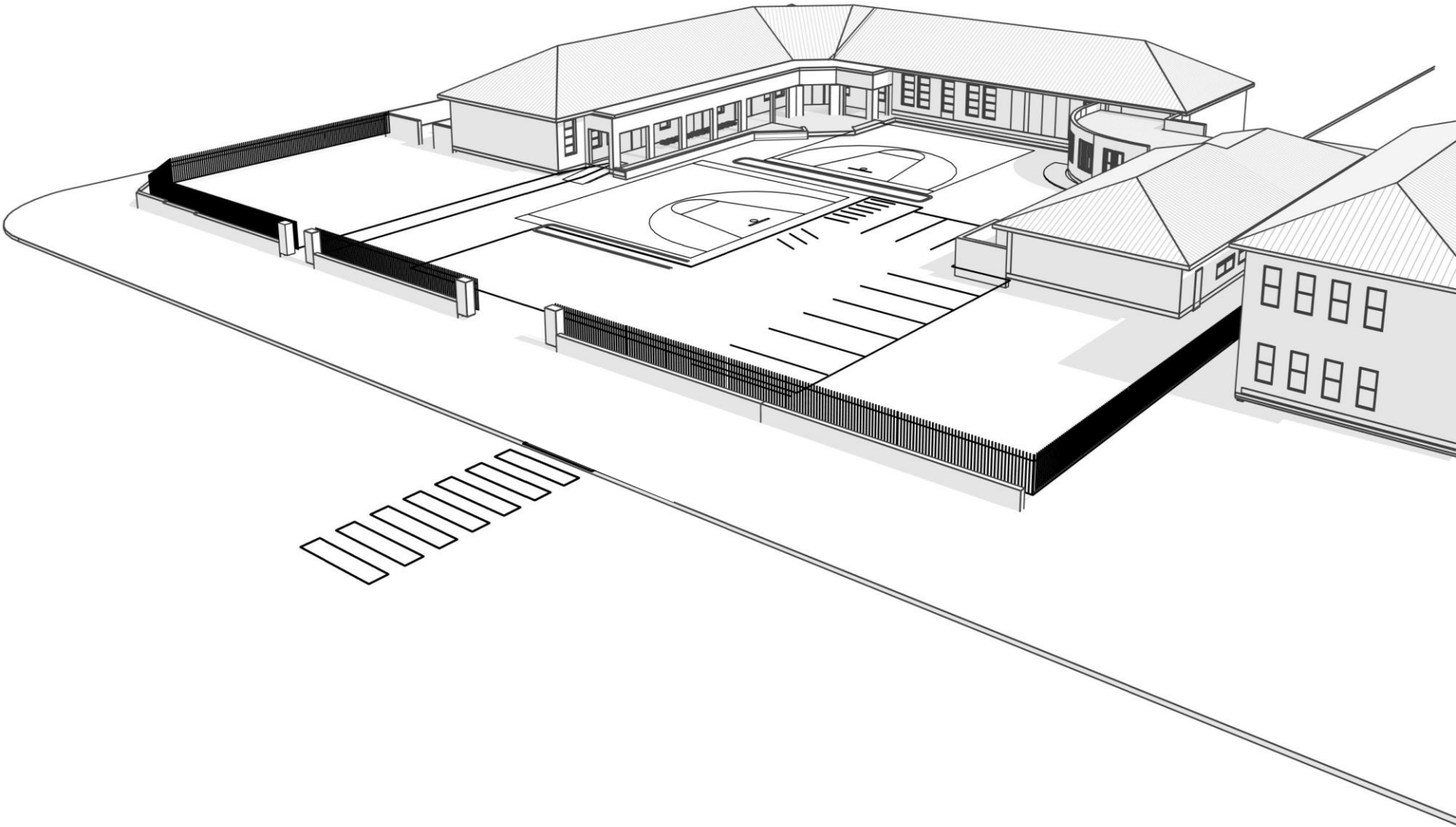
SITE PLAN-STAGE 2&3



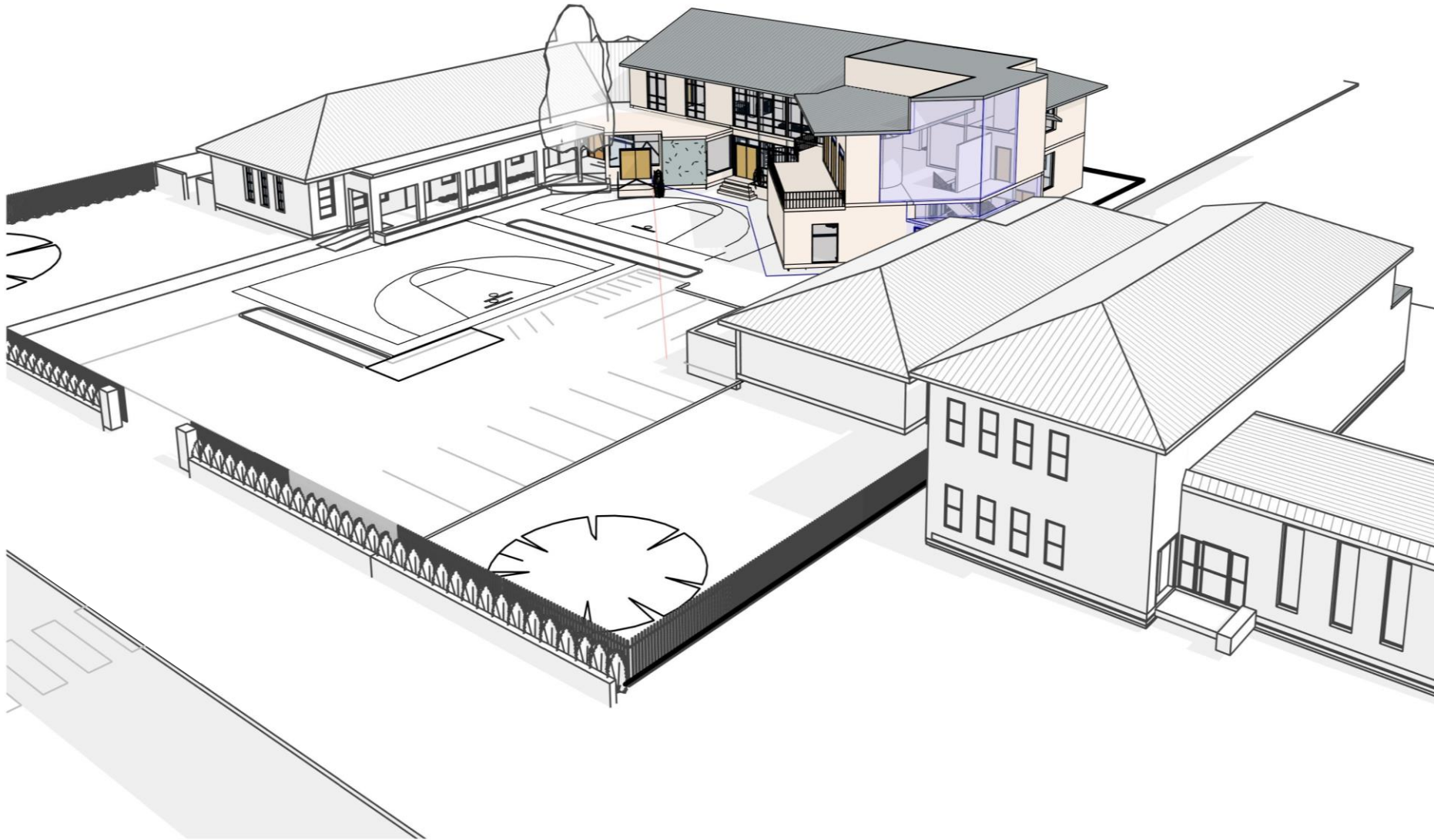
CONSTRUCTION STRATEGY



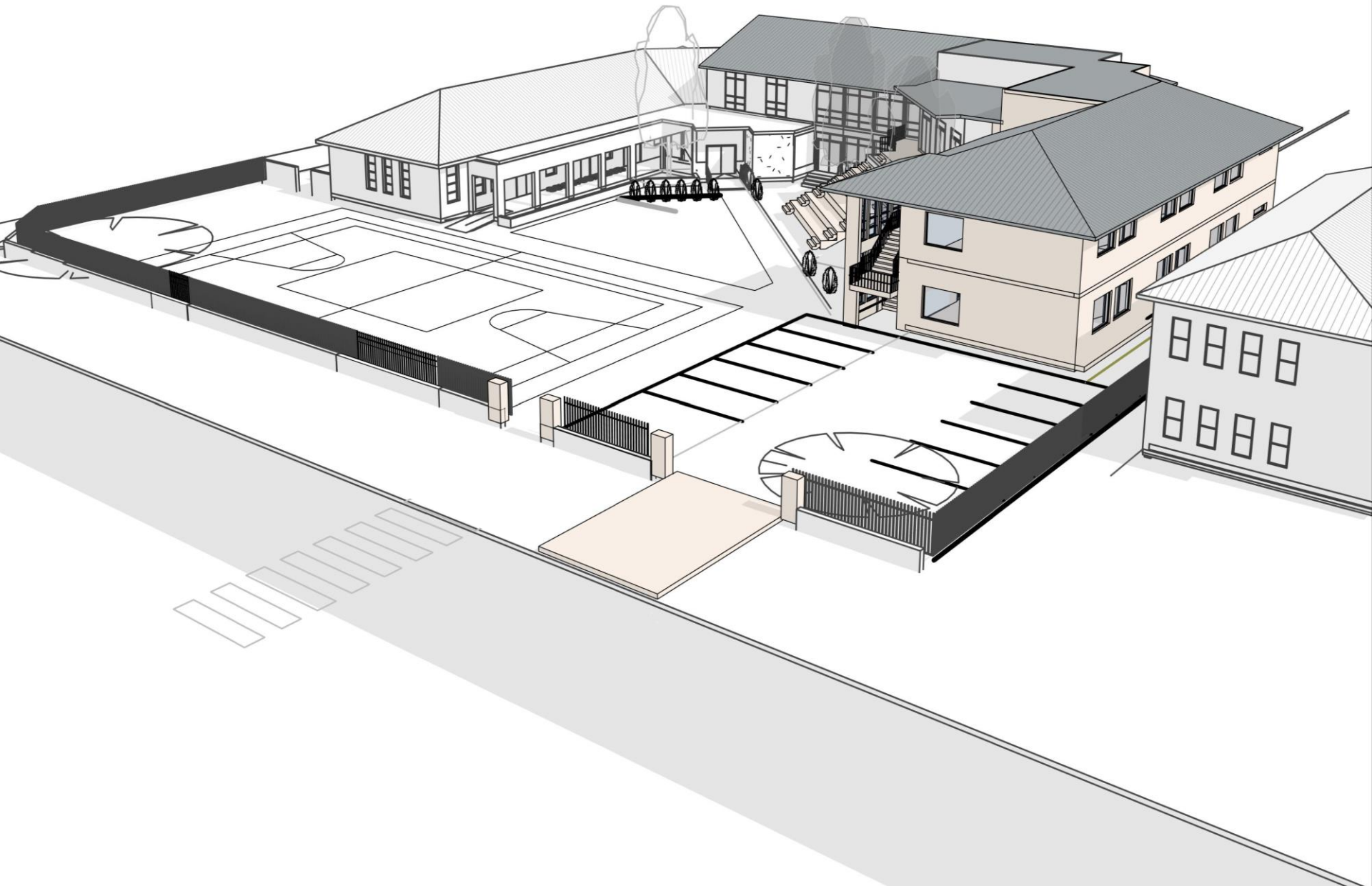
EXISTING STAGE 1 3D VIEW



STAGE 2 – 3D VIEW



STAGE 3 – 3D VIEW

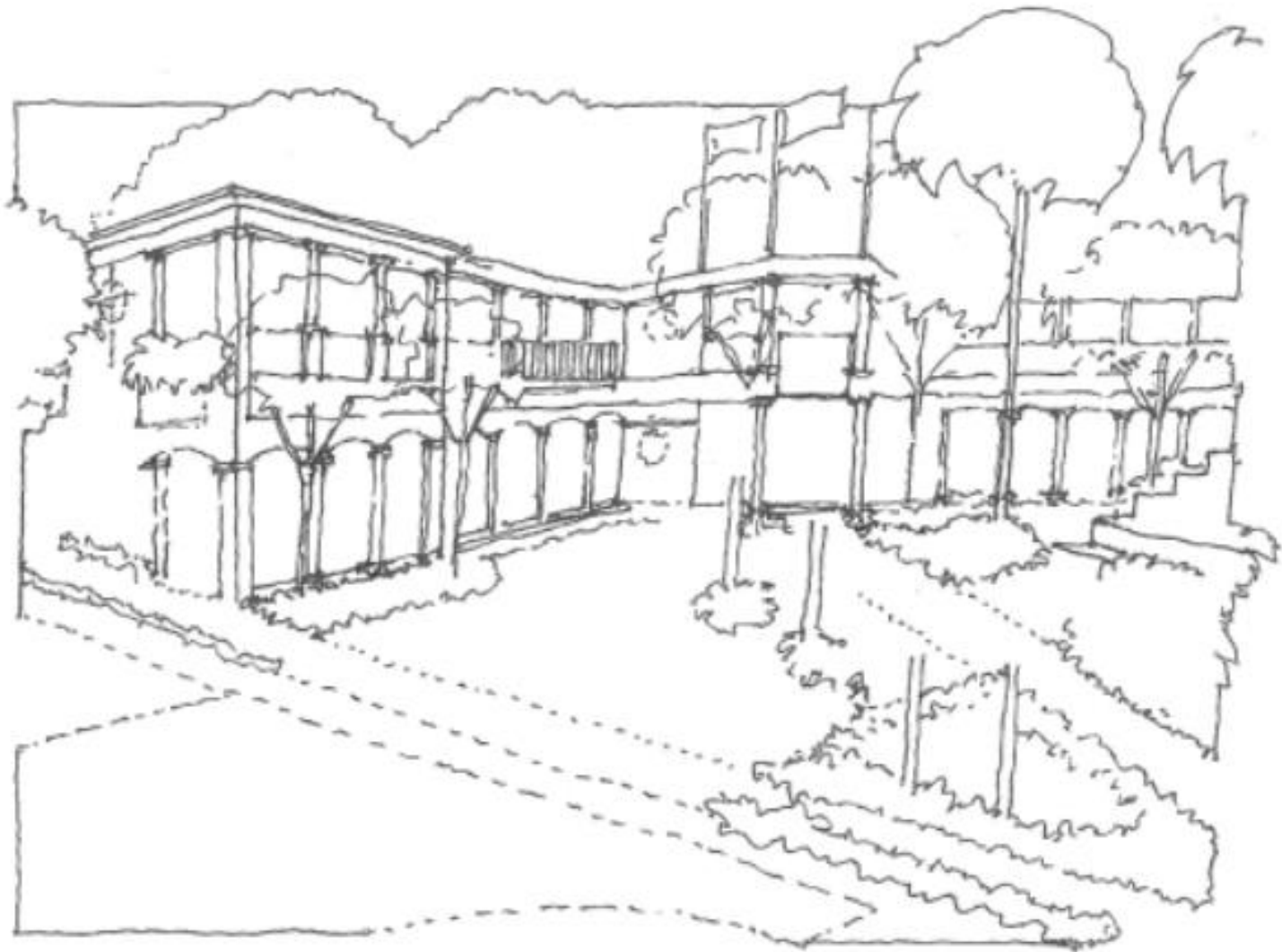


IMPRESSION 1



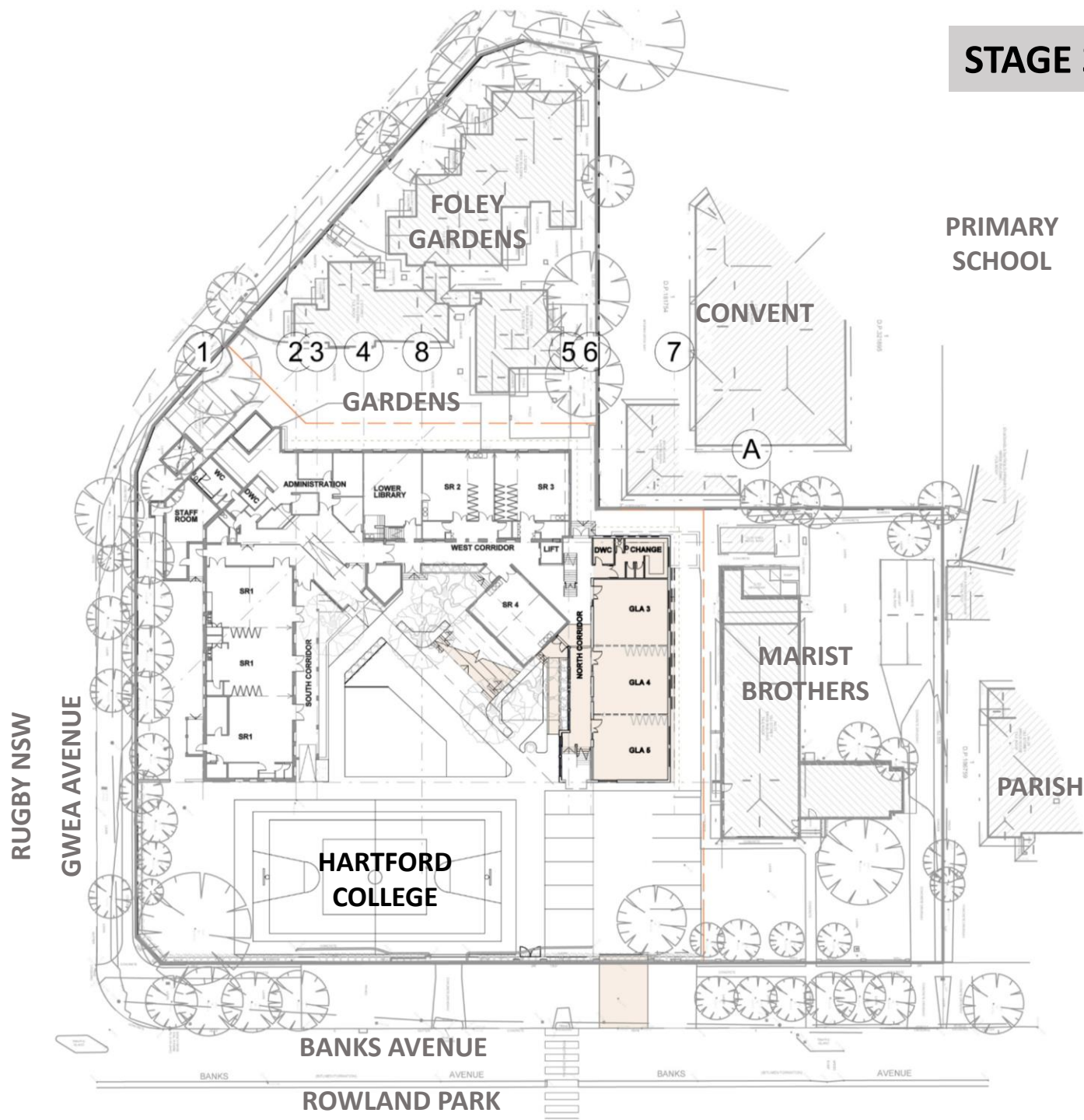
impression 1...

IMPRESSION 2



impression 2...

STAGE 3 – SITE PLAN

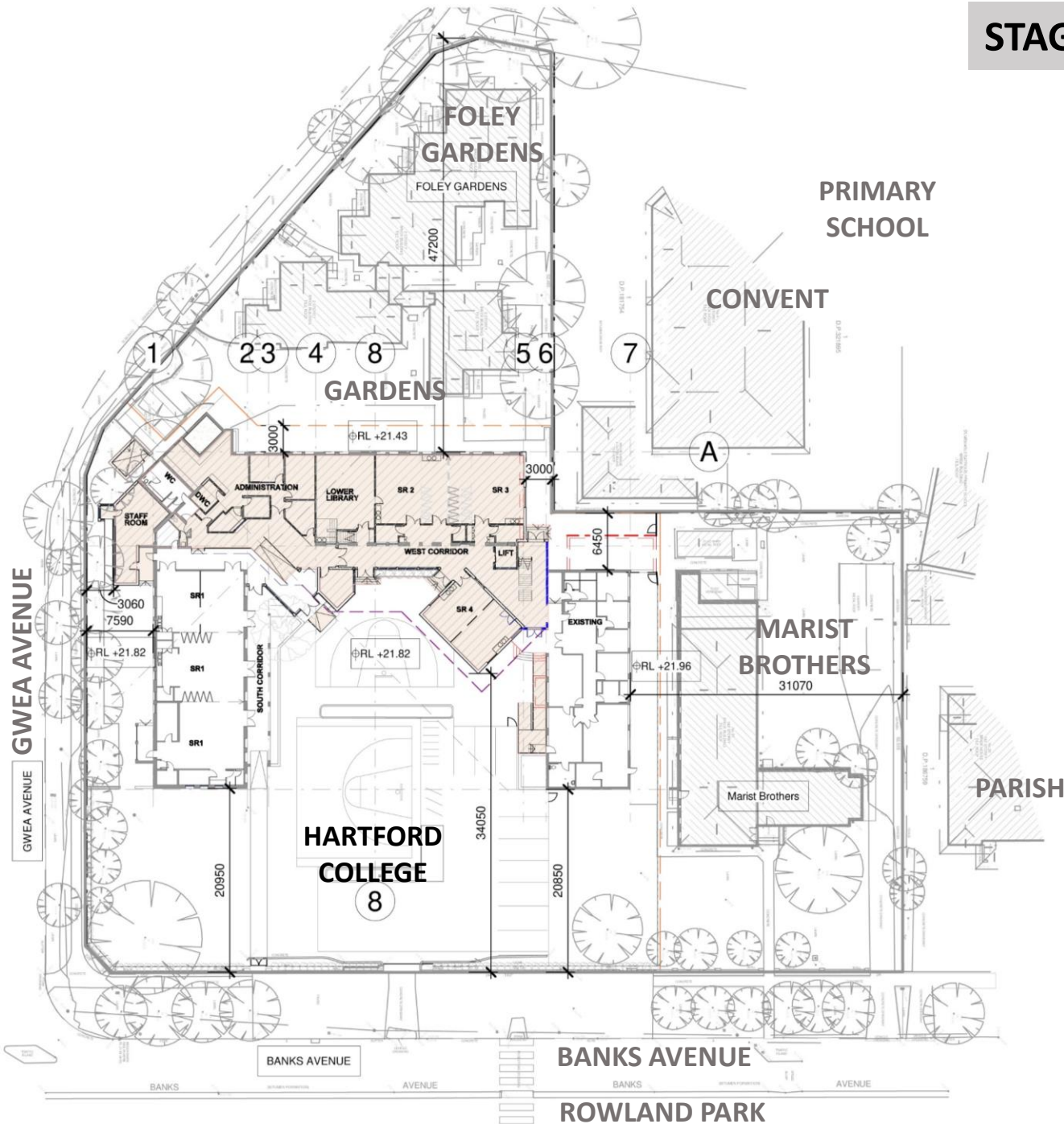


STAGE 2 – SITE PLAN

RUGBY NSW

GWEA AVENUE

GWEA AVENUE



PRIMARY
SCHOOL

CONVENT

MARIST
BROTHERS
31070

PARISH

HARTFORD
COLLEGE
8

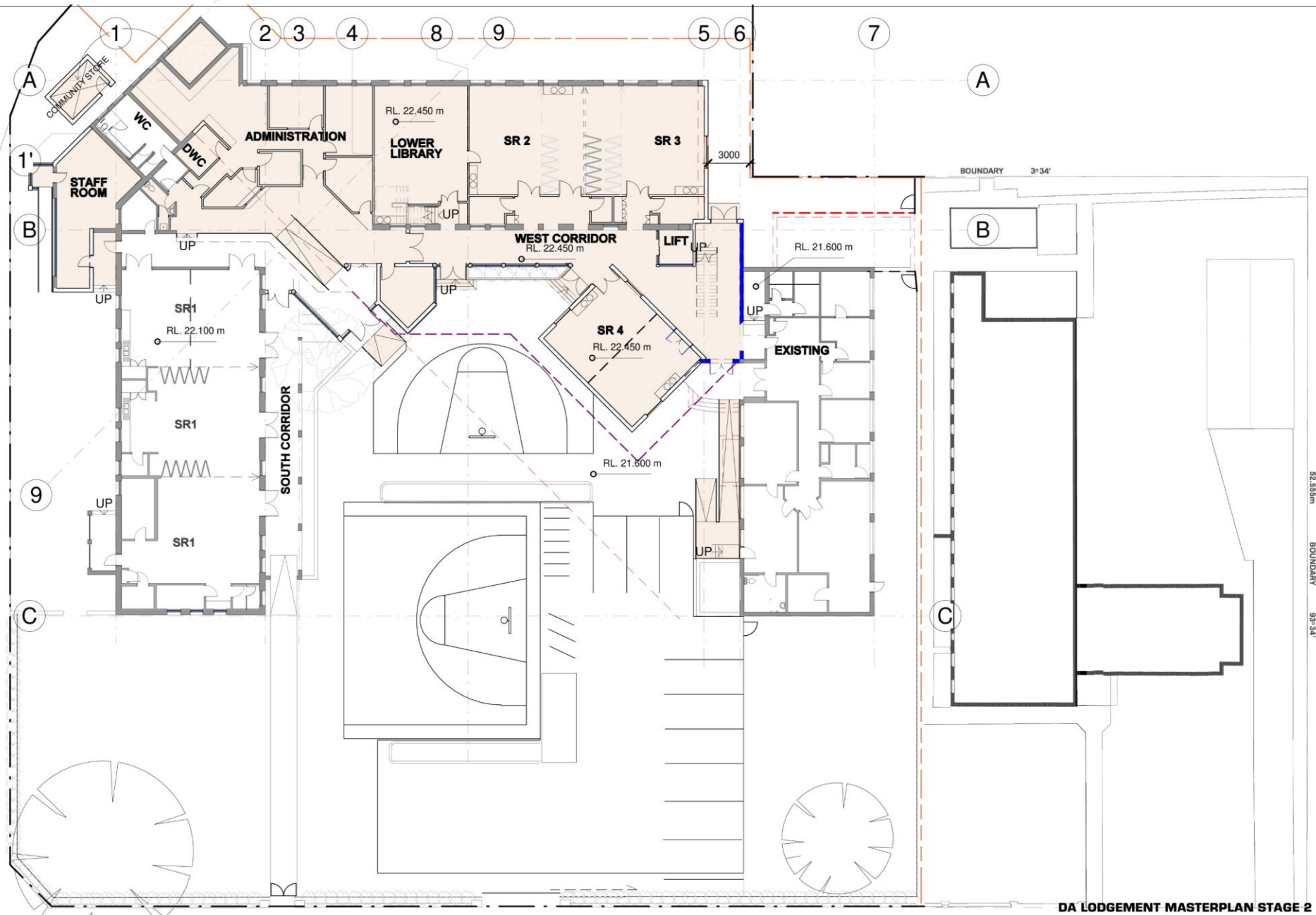
BANKS AVENUE

ROWLAND PARK

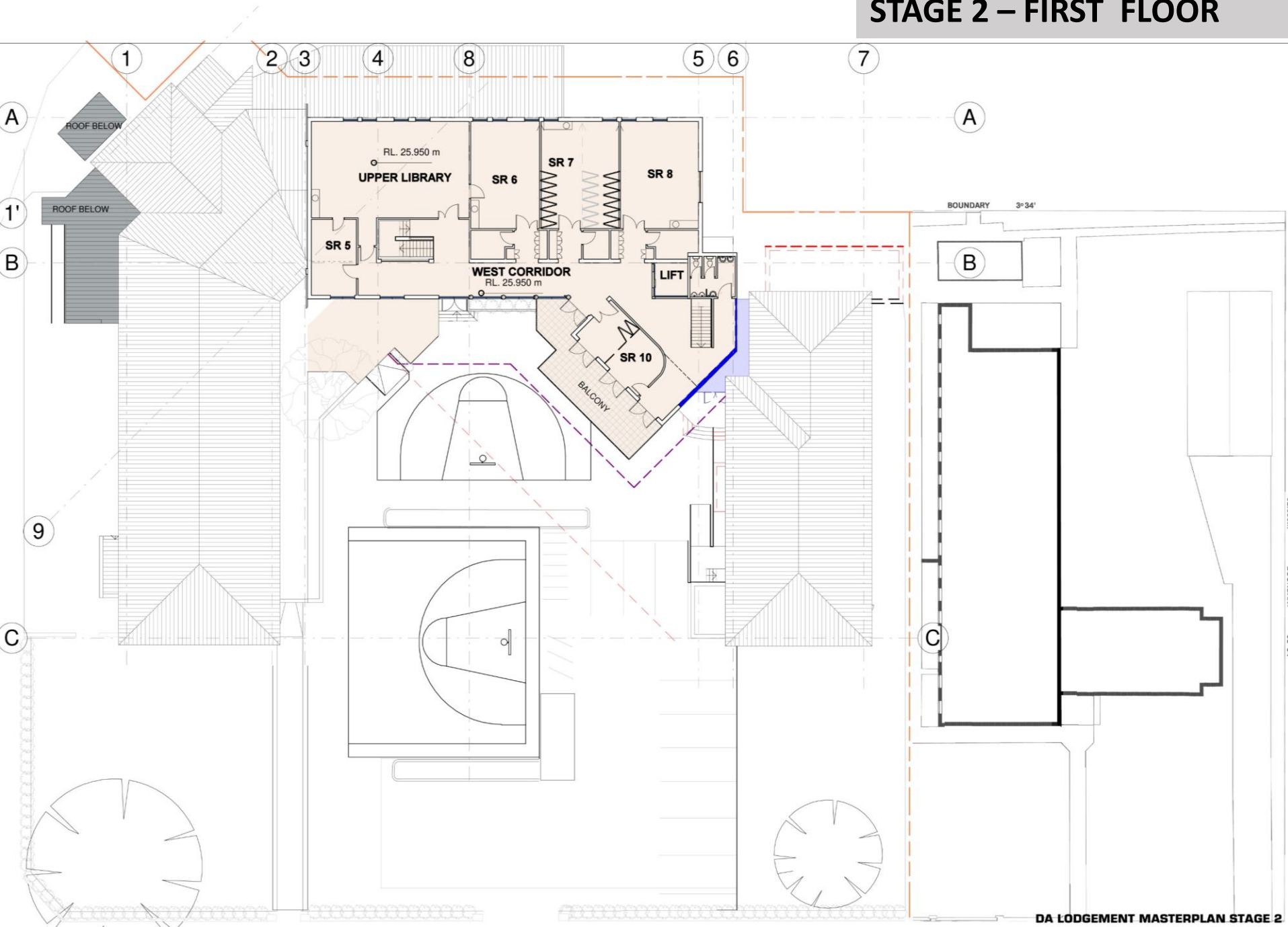
LEGEND

- PROPOSED DEVELOPMENT
- TO BE DEMOLISHED
- TEMPORARY WALLS

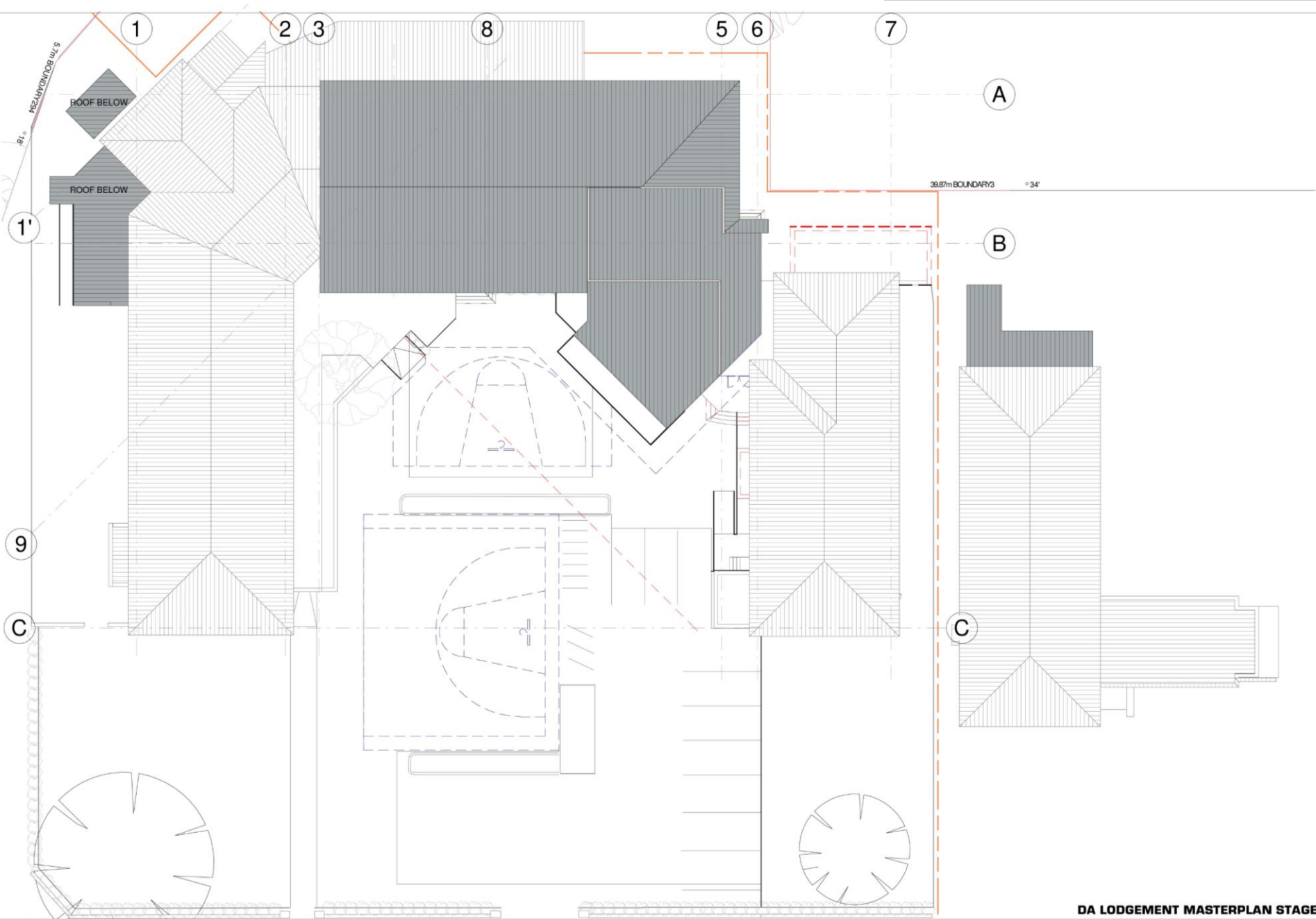
STAGE 2 – GROUND FLOOR



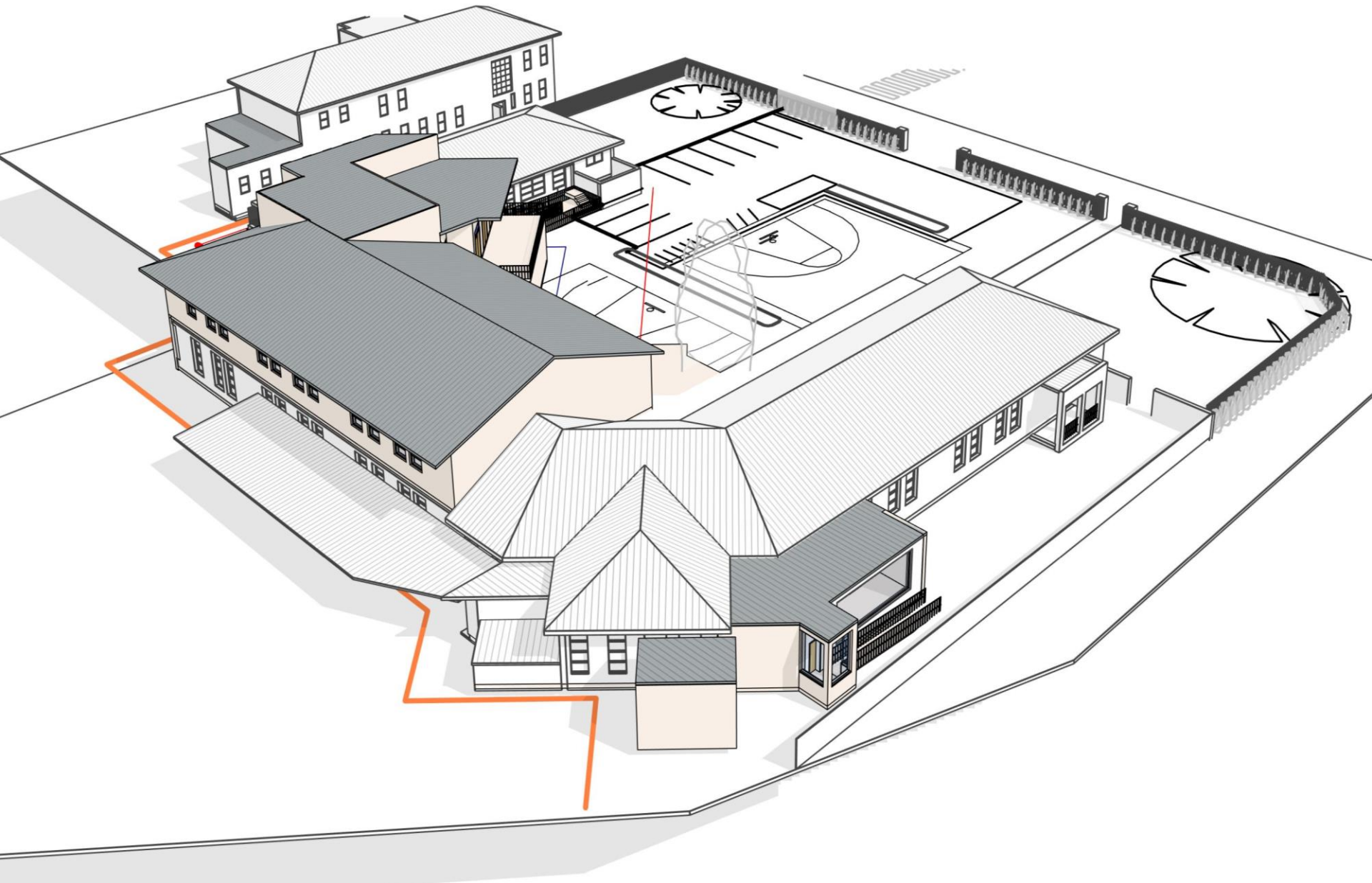
STAGE 2 – FIRST FLOOR



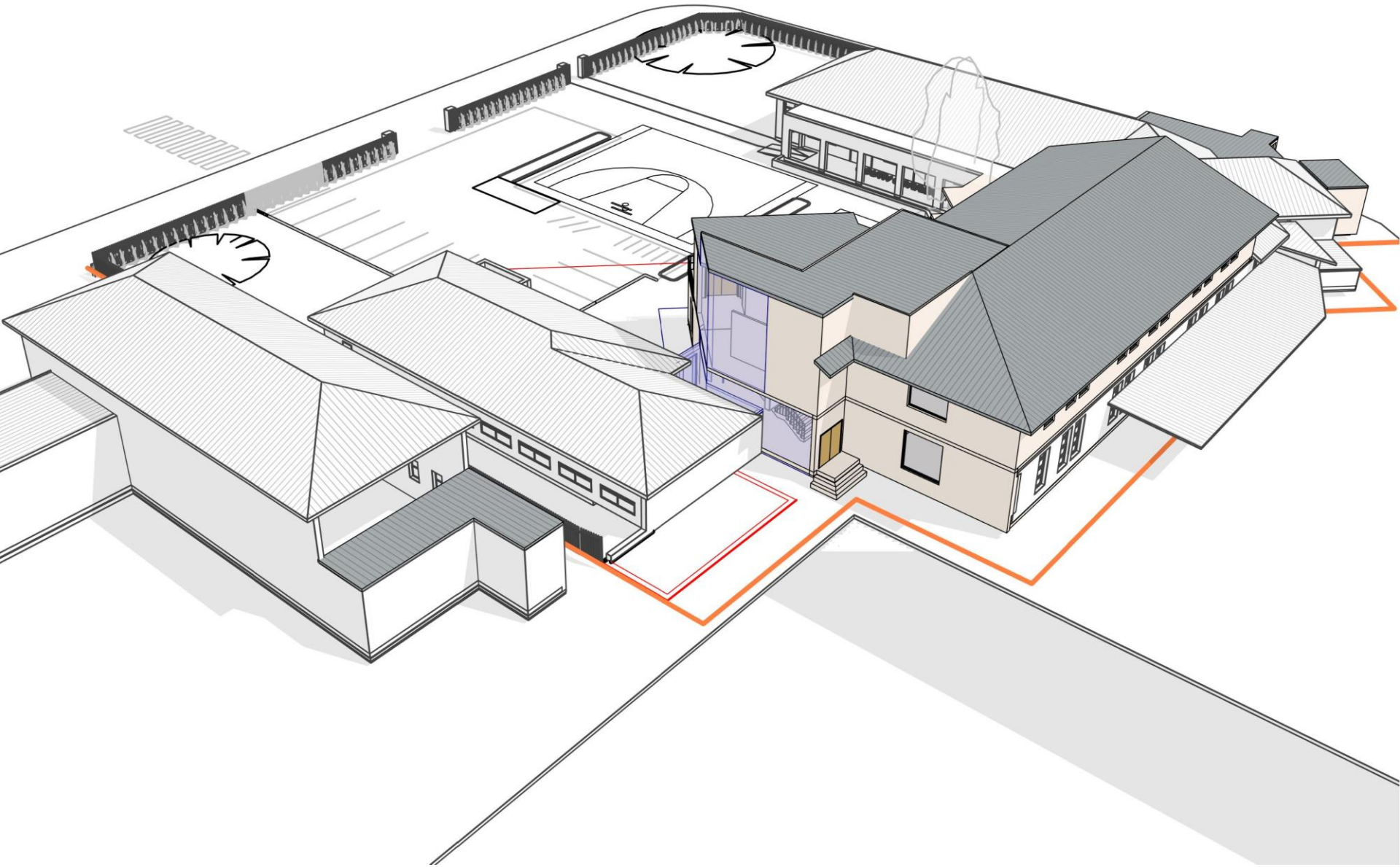
STAGE 2 – ROOF



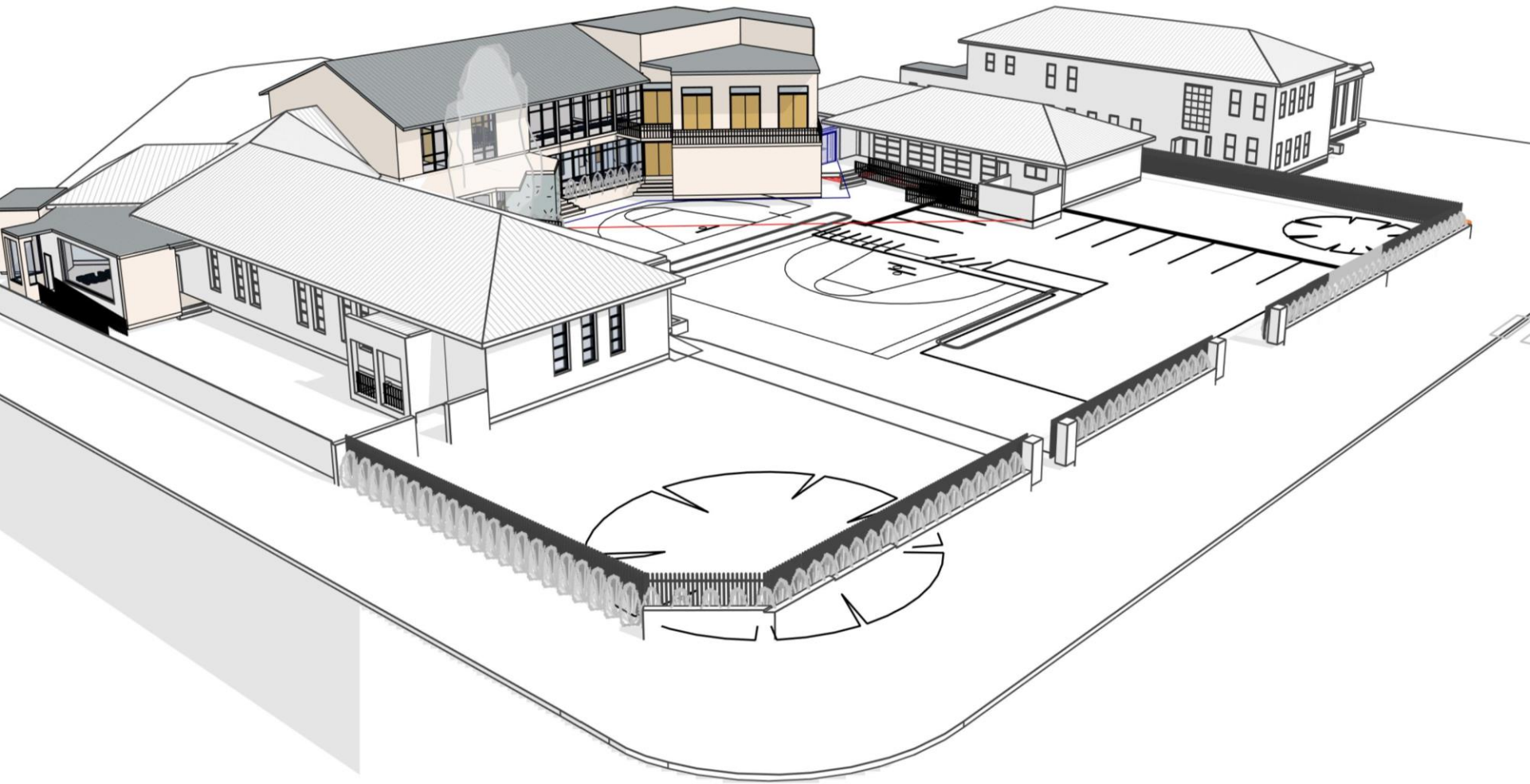
STAGE 2 – 3D VIEW



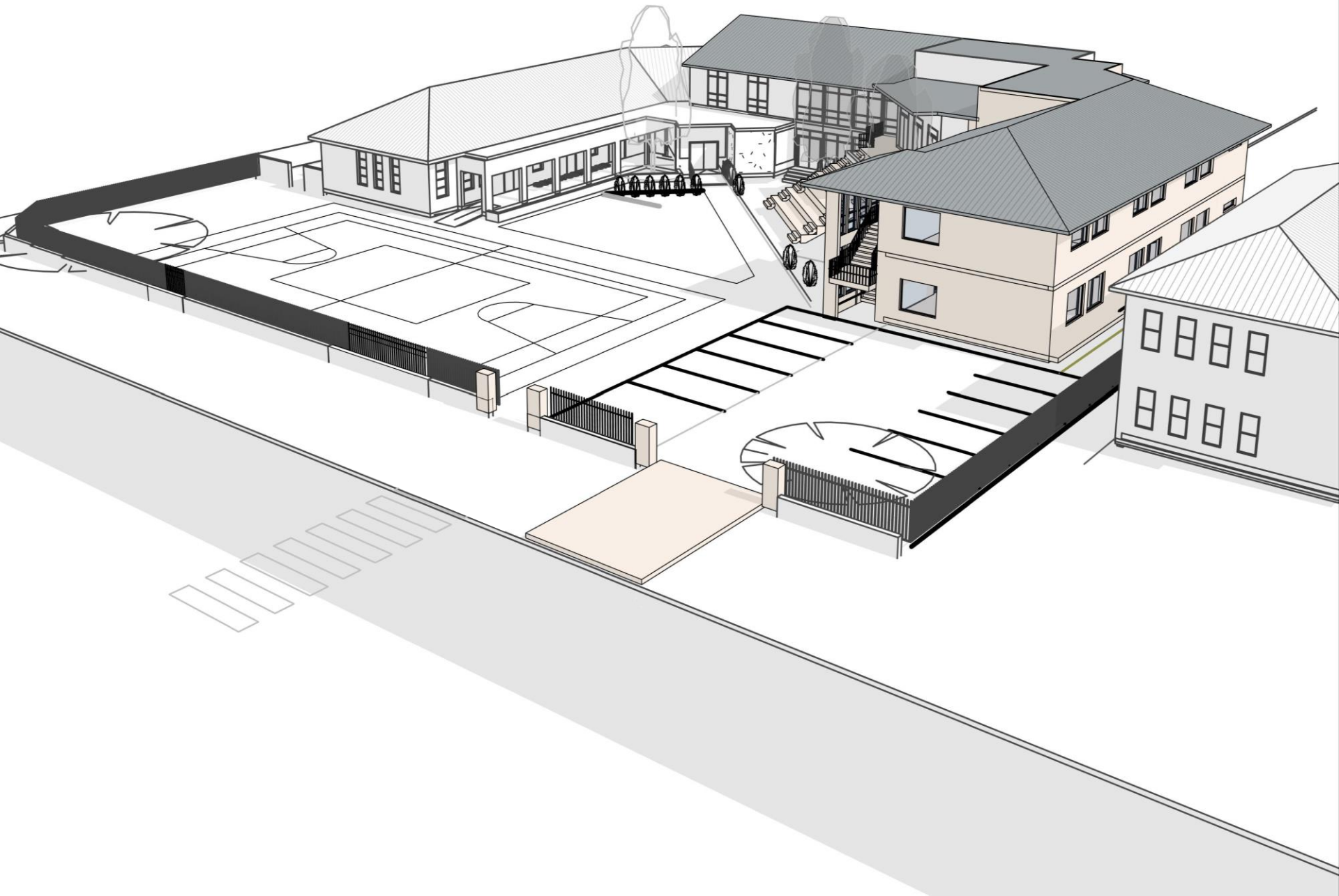
STAGE 2 – 3D VIEW



STAGE 2 – 3D VIEW



STAGE 2 – 3D VIEW



HARTFORD COLLEGE

STAGE 1 : OPENS 2023

STAGE 2 : OPENS 2024 (Yr 8)

STAGE 3 : OPENS 2025 / 2026
(Yr 9) / (Yr10)



PANEL PRESENTATION
JULY -2022



**DAVID FLEETING
ARCHITECTS**
DAVIDF@DFARCHITECTS.COM.AU
0407414755